



www.gratis-schnittmuster.de
6 Bahnen-Rock
___N40_0
Rückw.Rock Mitte
1XOS

Saum 3cm

www.gratis-schnittmus
6 Bahnen-Rock
___N40_0
Rückw.Rock Seite
2XOS

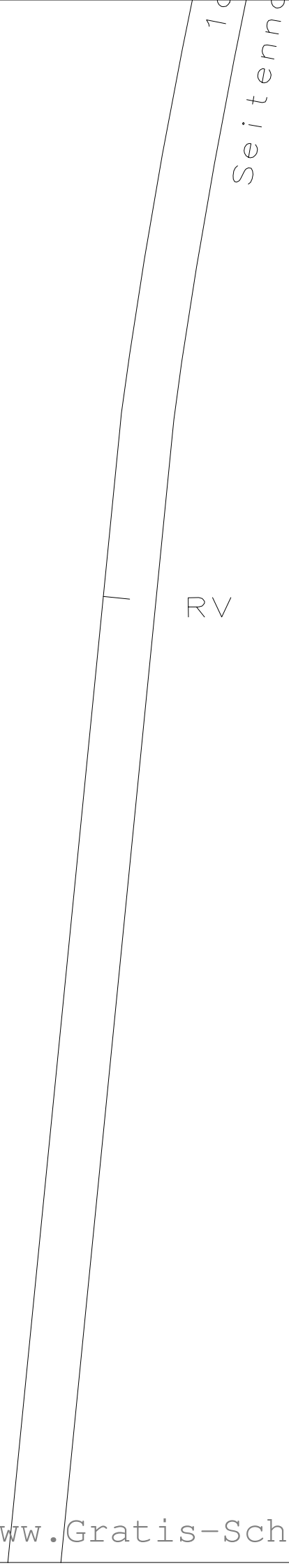
Saum

ter.de

3 cm

Teilungsnat

hintere Mitte Fadenlauf Stoffbruch



Fadenlauf

Teilungsnah

1 cm

www.gratis-schnittmuster.de
6 Bahnen-Rock
___N40_0
Vord.Rock Mitte
1XOS

Saum 3cm

1 cm

1 cm

www
6 B
—
Vor
2X0

.gratis-schnittmuster.de
ahnen-Rock
N40_0
d.Rock Seite
S

Saum 3cm

1 cm

vordere Mitte Fadenlauf Stoffbruch

Te

Fadenlauf



RV

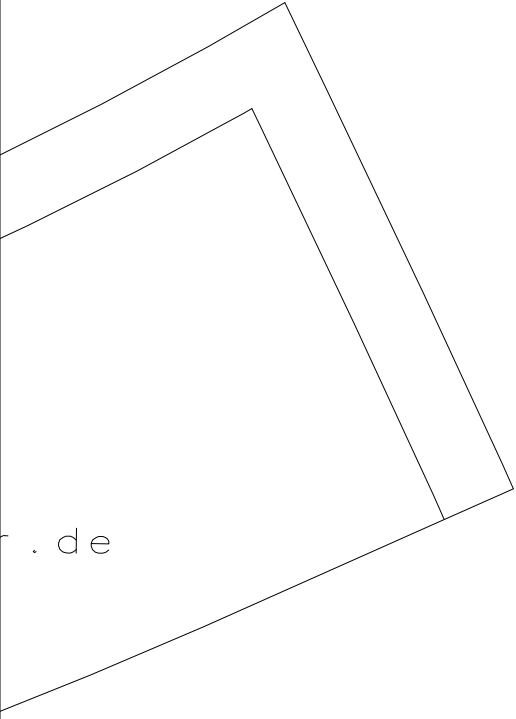
The image shows a technical drawing of a tapered shaft. The shaft is oriented vertically and tapers from top to bottom. At the top, there is a chamfered end. A horizontal line is drawn across the shaft, and the label 'RV' is placed to the left of this line. The drawing is composed of two main lines representing the shaft's profile, with a small gap between them at the top.

v Mitte Bruch FDL

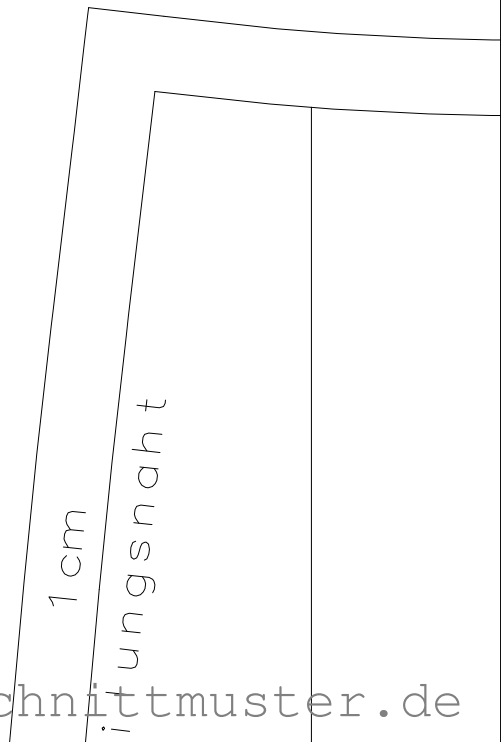
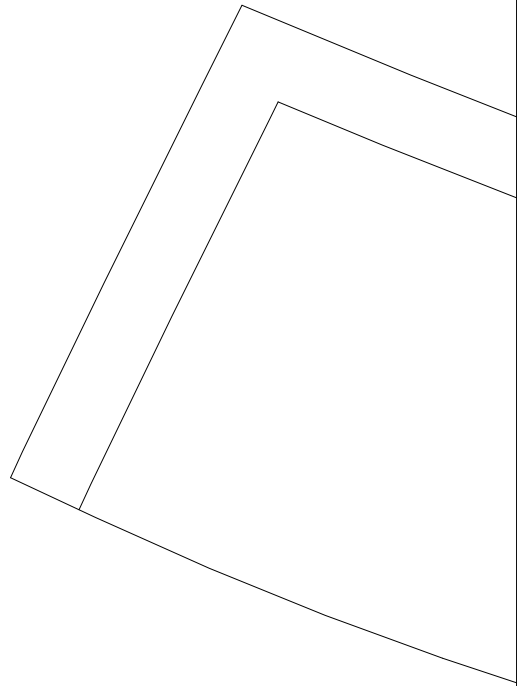
www.gratis-schnittmuster.de
6 Bahnen-Rock
N40_0
Beleg Vorderteil
1xOS
1xEinlage

1 cm

1 cm



. de



1 cm

Stichnaht

www.gratis-schnittmuster.de
6 Bahnen-Rock
___N40_0
Beleg Rückenteil
1xOS
1xEinlage

h Mitte Bruch FDL

1 cm

Spitennah

1 cm